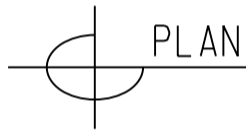
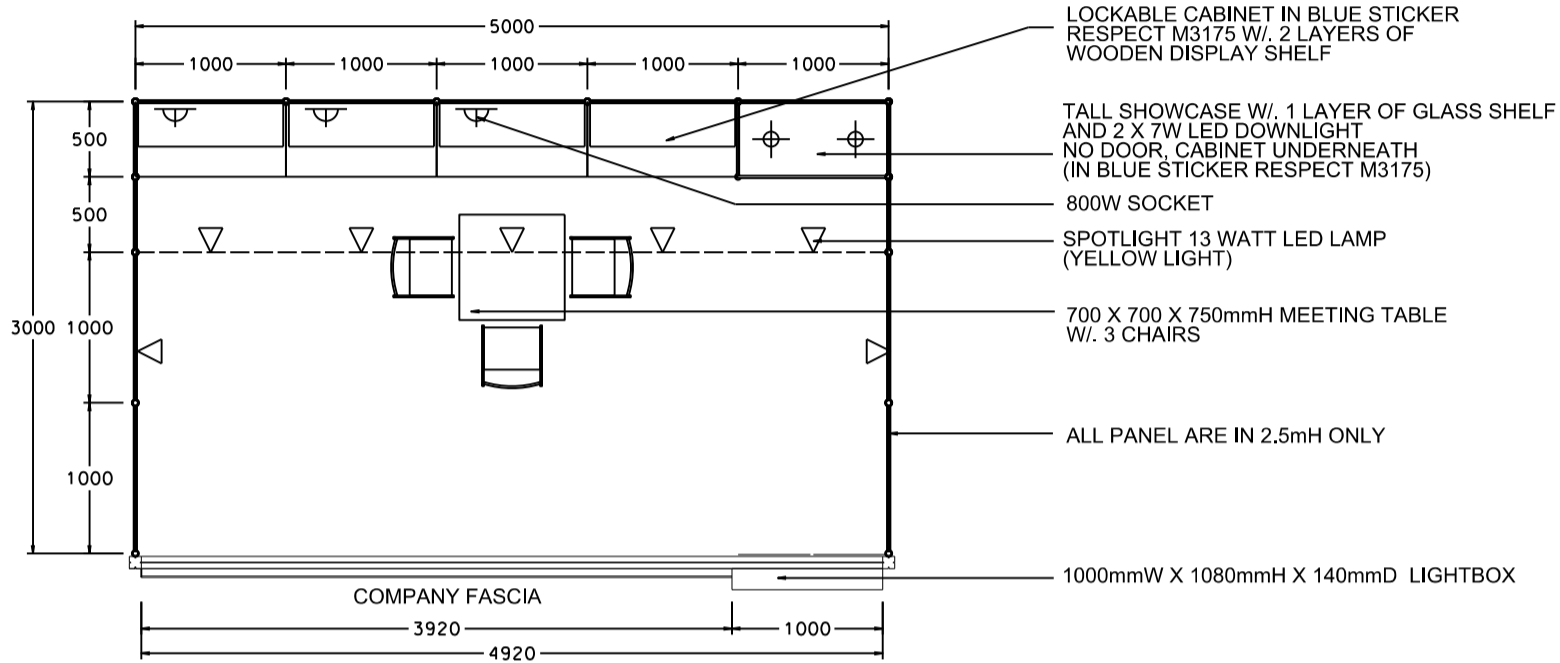


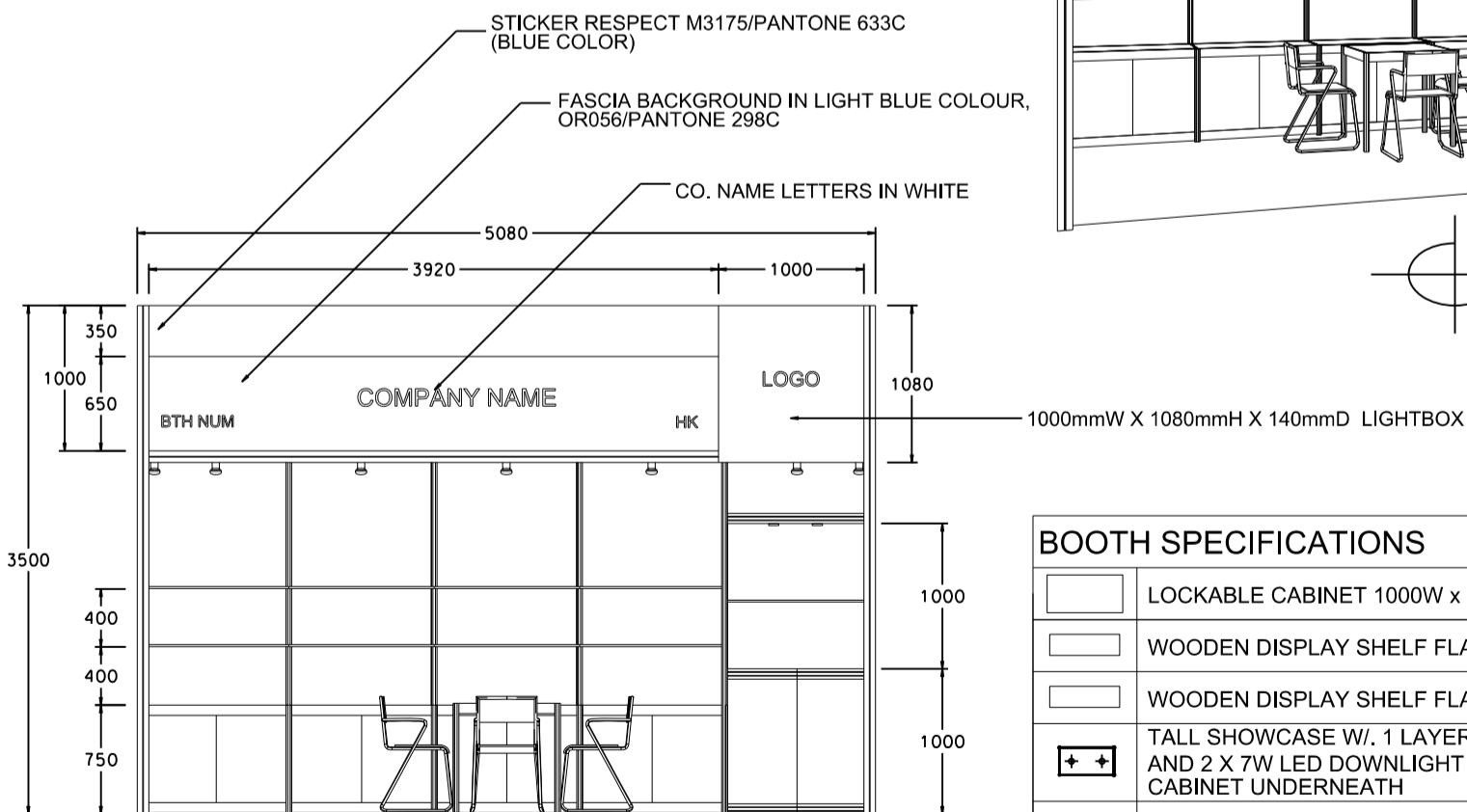
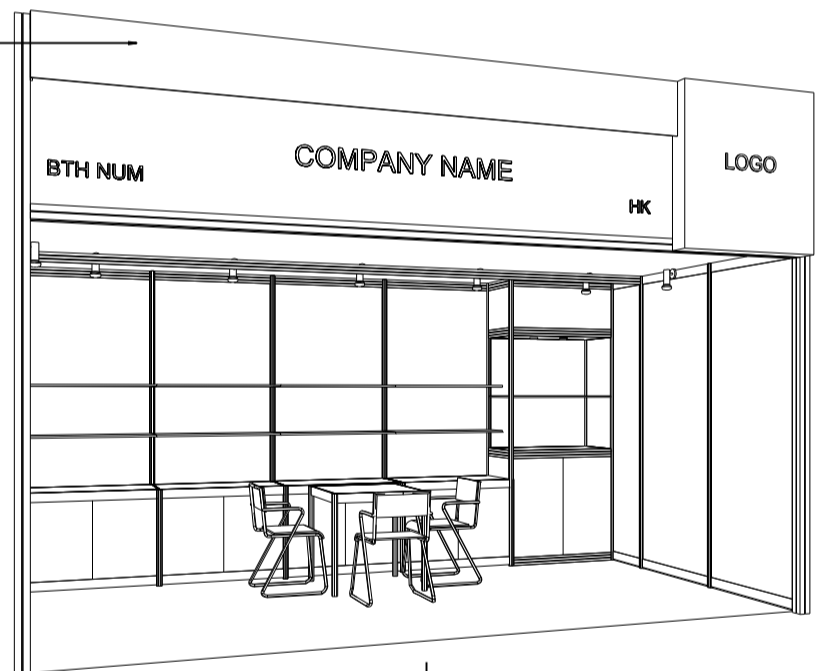
### OPTION A (NO SHOWCASE - BLUE)

### 5M x 3M Hall of Fame Booth

五米乘三米品牌薈萃廊特級攤位



CONCEALED LIGHT TROUGH TO HIGHLIGHT  
COMPANY FASCIA (IN BLUE COLOUR,  
RESPECT M3175/PANTONE 633C)



BOOTH SPECIFICATIONS		QTY.
	LOCKABLE CABINET 1000W x 500D x 750H mm	4
	WOODEN DISPLAY SHELF FLAT (3000W X 300D mm)	2
	WOODEN DISPLAY SHELF FLAT (1000W X 300D mm)	2
	TALL SHOWCASE W/ 1 LAYER OF GLASS SHELF AND 2 X 7W LED DOWNLIGHT (NO GLASS DOOR), CABINET UNDERNEATH	1
	800W SOCKET	3
	SPOTLIGHT 13 WATT LED LAMP (YELLOW LIGHT)	7
	700W x 700D x 750H mm MEETING TABLE	1
	BLACK LEATHER CHAIR	3
	CEILING BEAM	5M
	RUBBISH BIN & CARPET (15sqm.)	

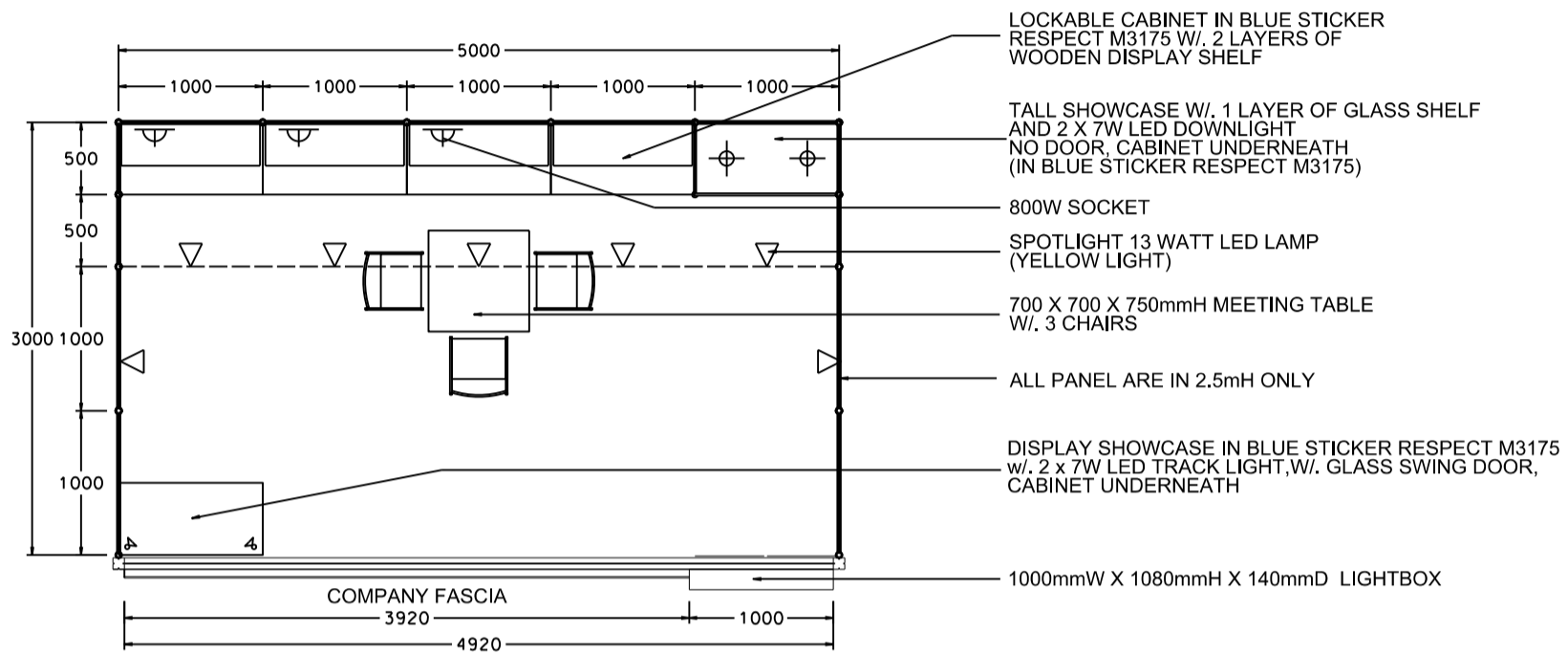
# Hong Kong Electronics Fair (Autumn Edition)

## 香港秋季電子產品展

### OPTION B (LOW SHOWCASE - BLUE)

### 5M x 3M Hall of Fame Booth

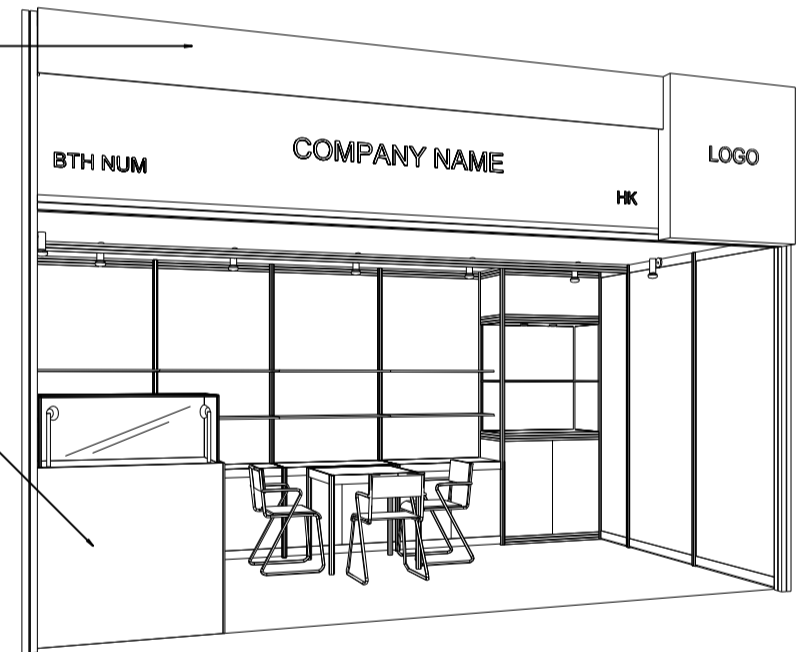
五米乘三米品牌薈萃廊特級攤位



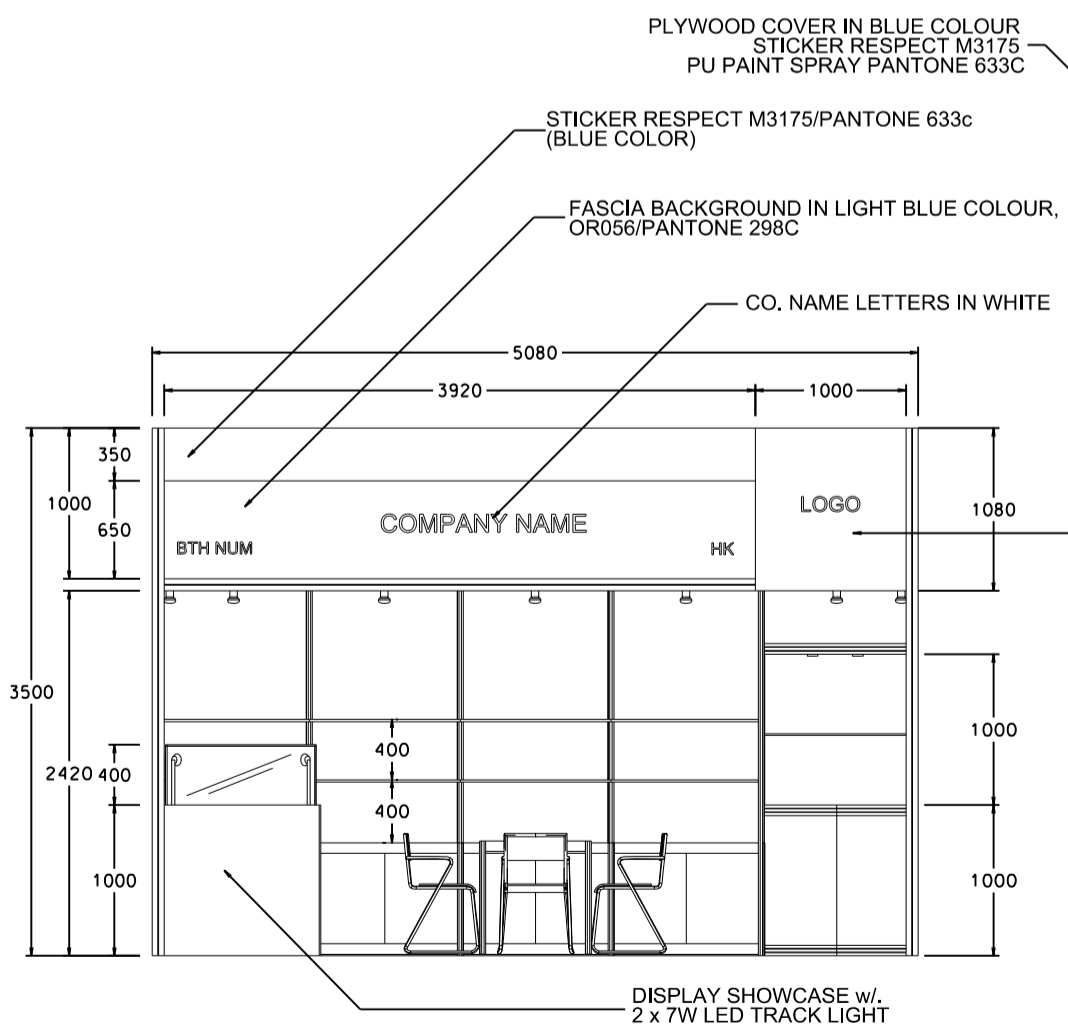
PLAN

- LOCKABLE CABINET IN BLUE STICKER RESPECT M3175 W/. 2 LAYERS OF WOODEN DISPLAY SHELF
- TALL SHOWCASE W/. 1 LAYER OF GLASS SHELF AND 2 X 7W LED DOWNLIGHT NO DOOR, CABINET UNDERNEATH (IN BLUE STICKER RESPECT M3175)
- 800W SOCKET
- SPOTLIGHT 13 WATT LED LAMP (YELLOW LIGHT)
- 700 X 700 X 750mmH MEETING TABLE W/. 3 CHAIRS
- ALL PANEL ARE IN 2.5mH ONLY
- DISPLAY SHOWCASE IN BLUE STICKER RESPECT M3175 w/. 2 x 7W LED TRACK LIGHT, W/. GLASS SWING DOOR, CABINET UNDERNEATH
- 1000mmW X 1080mmH X 140mmD LIGHTBOX

CONCEALED LIGHT TROUGH TO HIGHLIGHT COMPANY FASCIA (IN BLUE COLOUR, RESPECT M3175/PANTONE 633C)



PERSPECTIVE



ELEVATION

- PLYWOOD COVER IN BLUE COLOUR STICKER RESPECT M3175 PU PAINT SPRAY PANTONE 633C
- STICKER RESPECT M3175/PANTONE 633c (BLUE COLOR)
- FASCIA BACKGROUND IN LIGHT BLUE COLOUR, OR056/PANTONE 298C
- CO. NAME LETTERS IN WHITE

1000mmW X 1080mmH X 140mmD LIGHTBOX

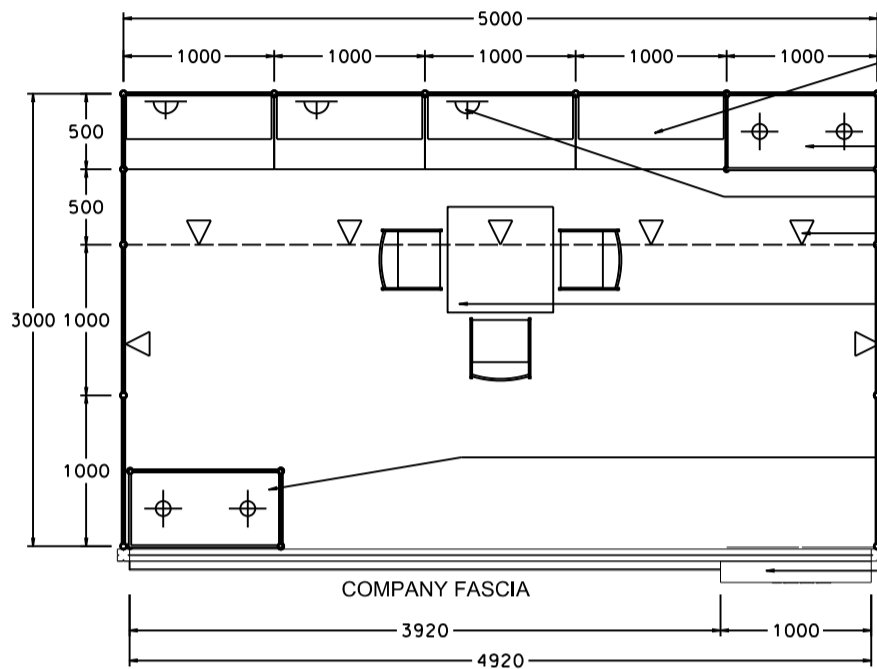
BOOTH SPECIFICATIONS		QTY.
	LOCKABLE CABINET 1000W x 500D x 750H mm	4
	WOODEN DISPLAY SHELF FLAT (3000W X 300D mm)	2
	WOODEN DISPLAY SHELF FLAT (1000W X 300D mm)	2
	DISPLAY SHOWCASE W/. 2 X 7W LED TRACK LIGHT W/. GLASS SWING DOOR, CABINET UNDERNEATH	1
	TALL SHOWCASE W/. 1 LAYER OF GLASS SHELF AND 2 X 7W LED DOWNLIGHT (NO GLASS DOOR), CABINET UNDERNEATH	1
	800W SOCKET	3
	SPOTLIGHT 13 WATT LED LAMP (YELLOW LIGHT)	7
	700W x 700D x 750H mm MEETING TABLE	1
	BLACK LEATHER CHAIR	3
	CEILING BEAM	5M
	RUBBISH BIN & CARPET (15sqm.)	

\*The Hong Kong Trade Development Council reserves the right to change the configuration if necessary.  
\*如有需要，香港貿易發展局有權更改攤位結構。

### OPTION C (TALL SHOWCASE - BLUE)

### 5M x 3M Hall of Fame Booth

五米乘三米品牌薈萃廊特級攤位



PLAN

LOCKABLE CABINET IN BLUE STICKER RESPECT M3175 W/ 2 LAYERS OF WOODEN DISPLAY SHELF

TALL SHOWCASE W/ 1 LAYER OF GLASS SHELF AND 2 X 7W LED DOWNLIGHT NO DOOR, CABINET UNDERNEATH (IN BLUE STICKER RESPECT M3175)

800W SOCKET

SPOTLIGHT 13 WATT LED LAMP (YELLOW LIGHT)

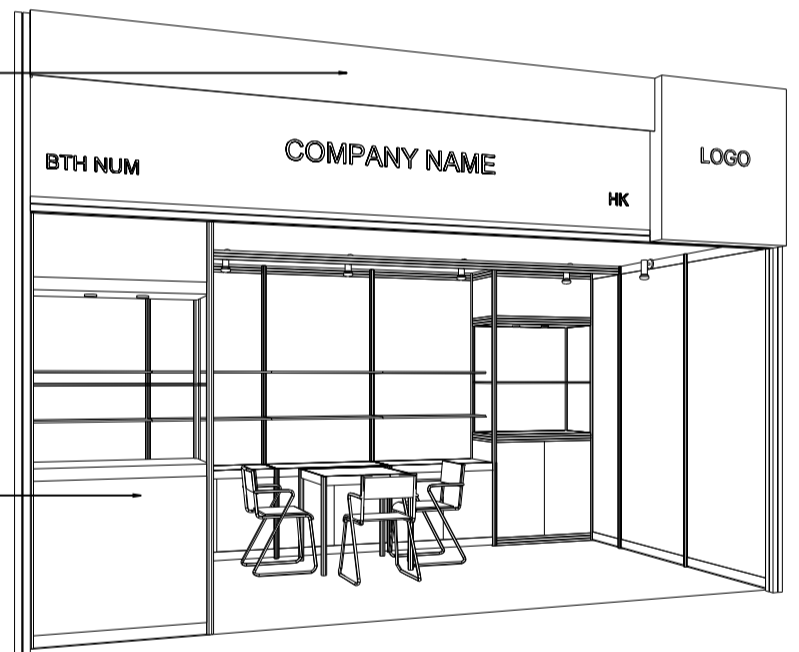
ALL PANEL ARE IN 2.5mH ONLY

700 X 700 X 750mmH MEETING TABLE W/ 3 CHAIRS

TALL SHOWCASE IN BLUE STICKER RESPECT M3175 W/ 1 LAYER OF GLASS SHELF AND 2 X 7W LED DOWNLIGHT (NO DOOR) CABINET UNDERNEATH

1000mmW X 1080mmH X 140mmD LIGHTBOX

CONCEALED LIGHT TROUGH TO HIGHLIGHT COMPANY FASCIA (IN BLUE COLOUR, RESPECT M3175/PANTONE 633c)



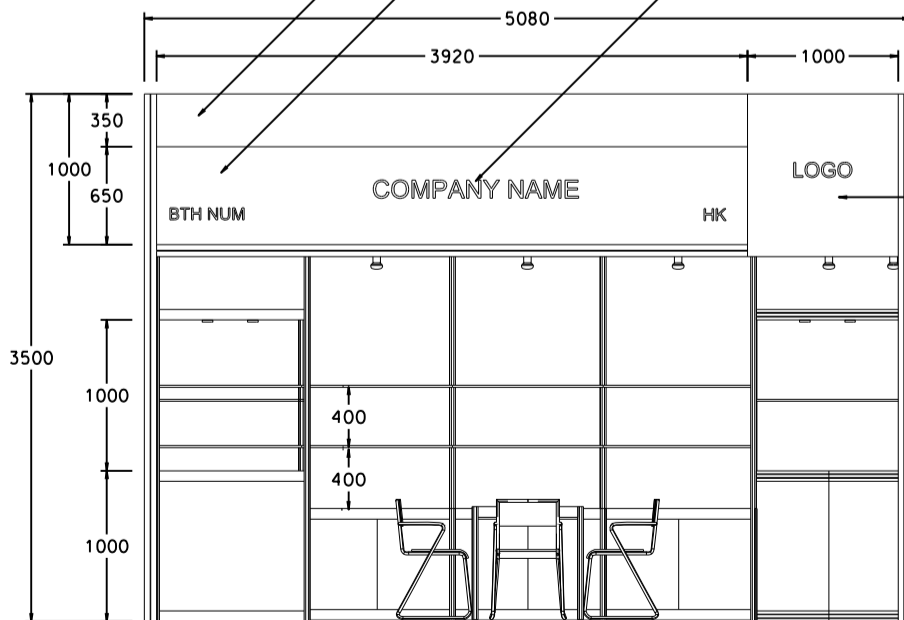
PERSPECTIVE

TALL SHOWCASE IN BLUE STICKER RESPECT M3175 W/ 1 LAYER OF GLASS SHELF AND 2 X 7W LED DOWNLIGHT (NO DOOR) CABINET UNDERNEATH

STICKER RESPECT M3175/PANTONE 633c (BLUE COLOR)

FASCIA BACKGROUND IN LIGHT BLUE COLOUR, OR056/PANTONE 298C

CO. NAME LETTERS IN WHITE



ELEVATION

#### BOOTH SPECIFICATIONS

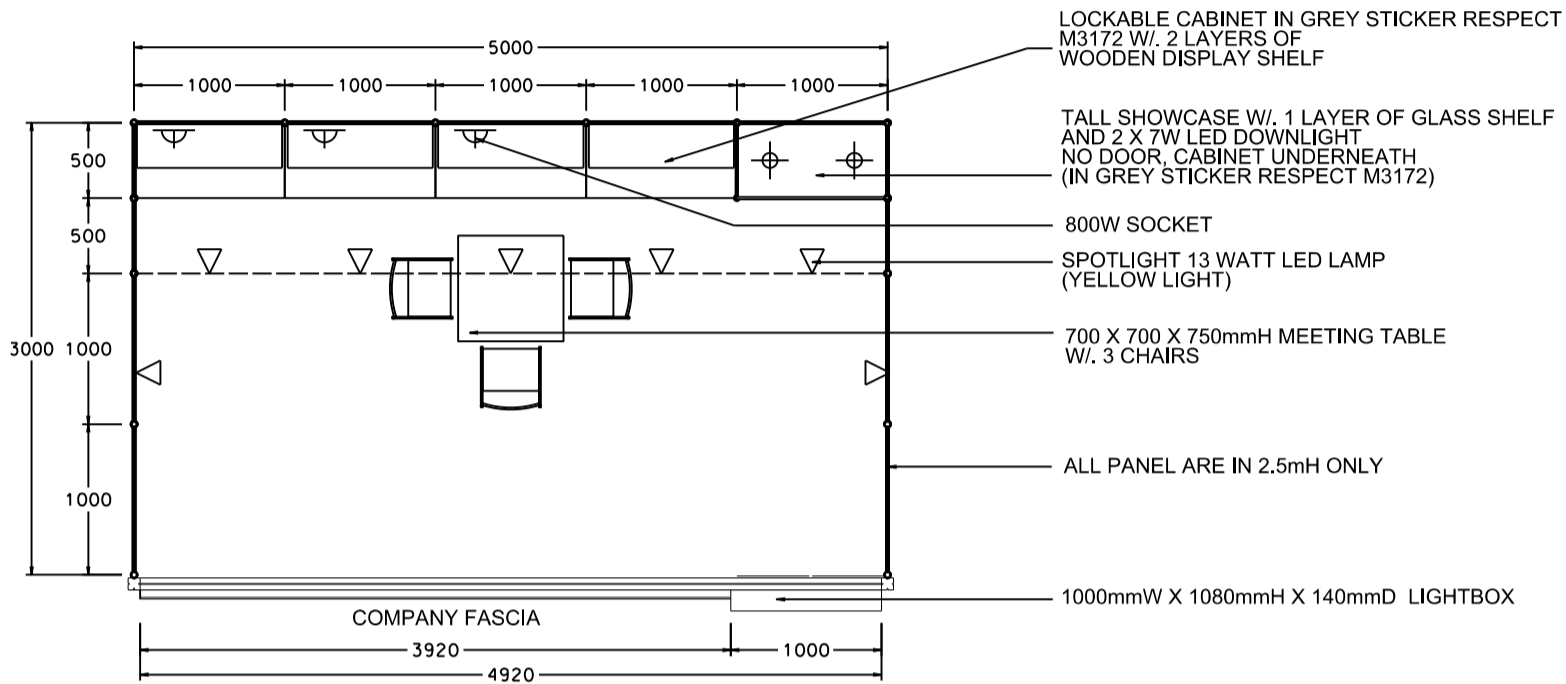
#### QTY.

	LOCKABLE CABINET 1000W x 500D x 750H mm	4
	WOODEN DISPLAY SHELF FLAT (3000W X 300D mm)	2
	WOODEN DISPLAY SHELF FLAT (1000W X 300D mm)	2
	TALL SHOWCASE W/ 1 LAYER OF GLASS SHELF AND 2 X 7W LED DOWNLIGHT (NO GLASS DOOR), CABINET UNDERNEATH	2
	800W SOCKET	3
	SPOTLIGHT 13 WATT LED LAMP (YELLOW LIGHT)	7
	700W x 700D x 750H mm MEETING TABLE	1
	BLACK LEATHER CHAIR	3
	CEILING BEAM	5M
	RUBBISH BIN & CARPET (15sqm.)	

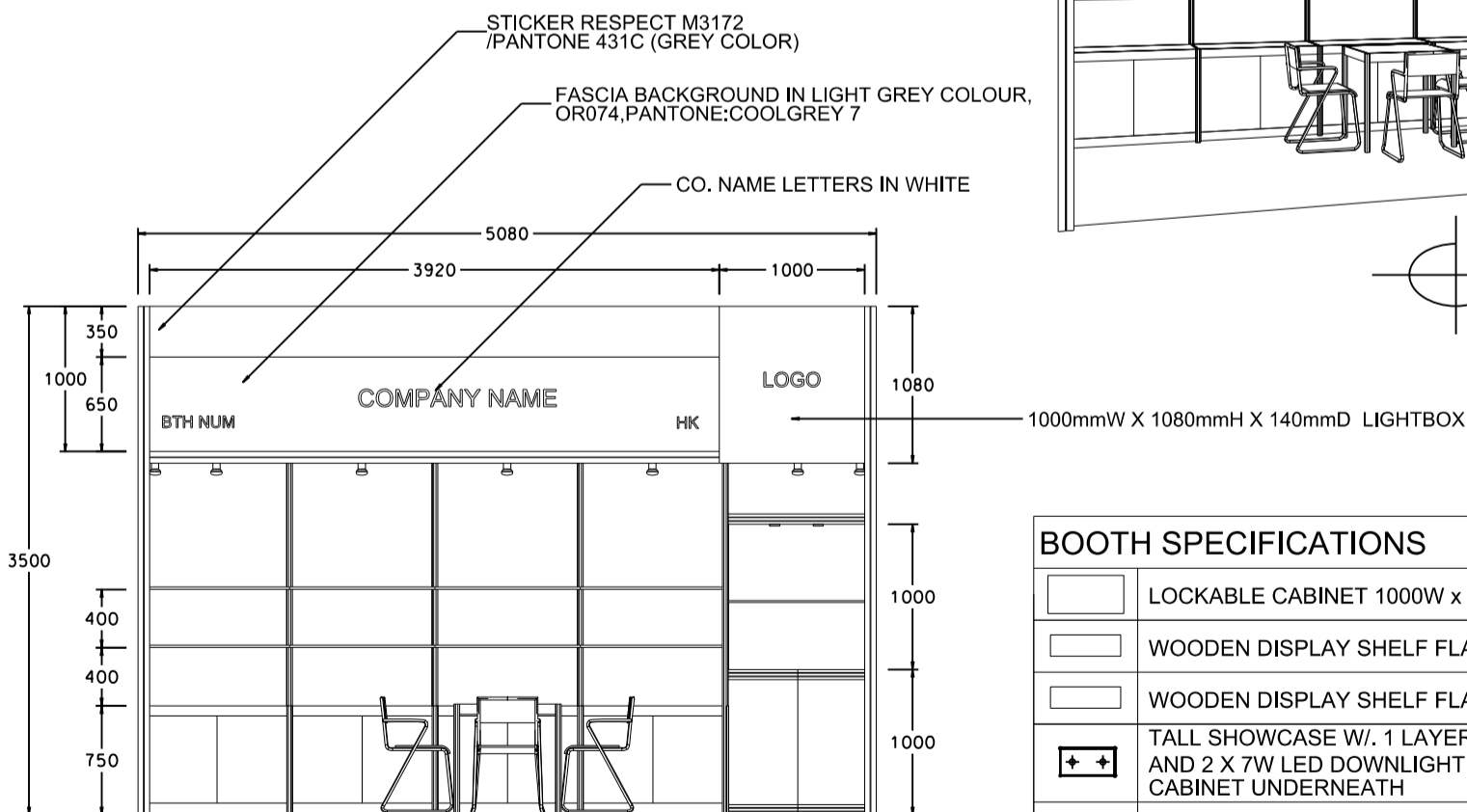
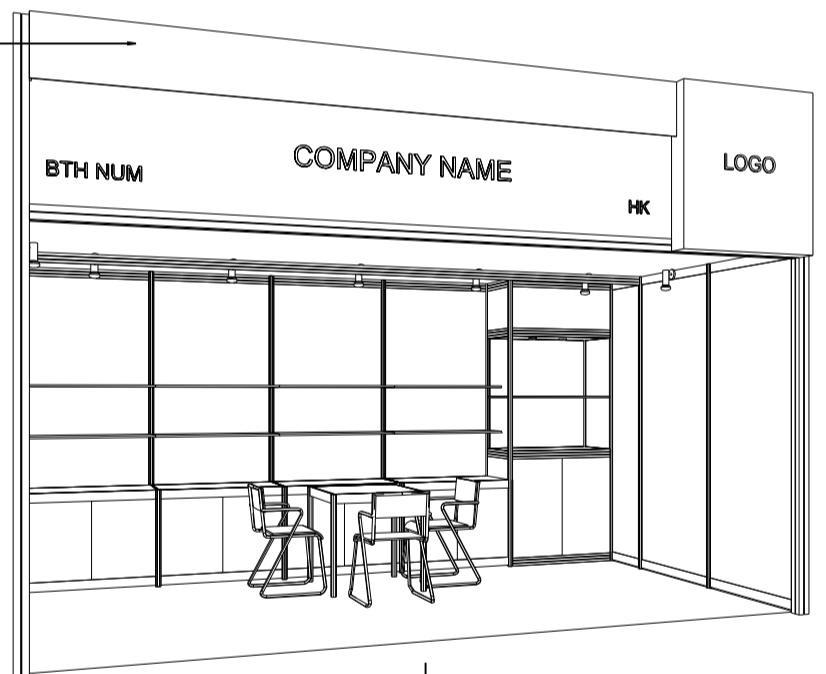
### OPTION D (NO SHOWCASE - GREY)

### 5M x 3M Hall of Fame Booth

五米乘三米品牌薈萃廊特級攤位



CONCEALED LIGHT TROUGH TO HIGHLIGHT COMPANY FASCIA (IN GREY STICKER RESPECT M3172/PANTONE 431C)

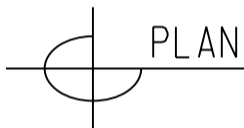
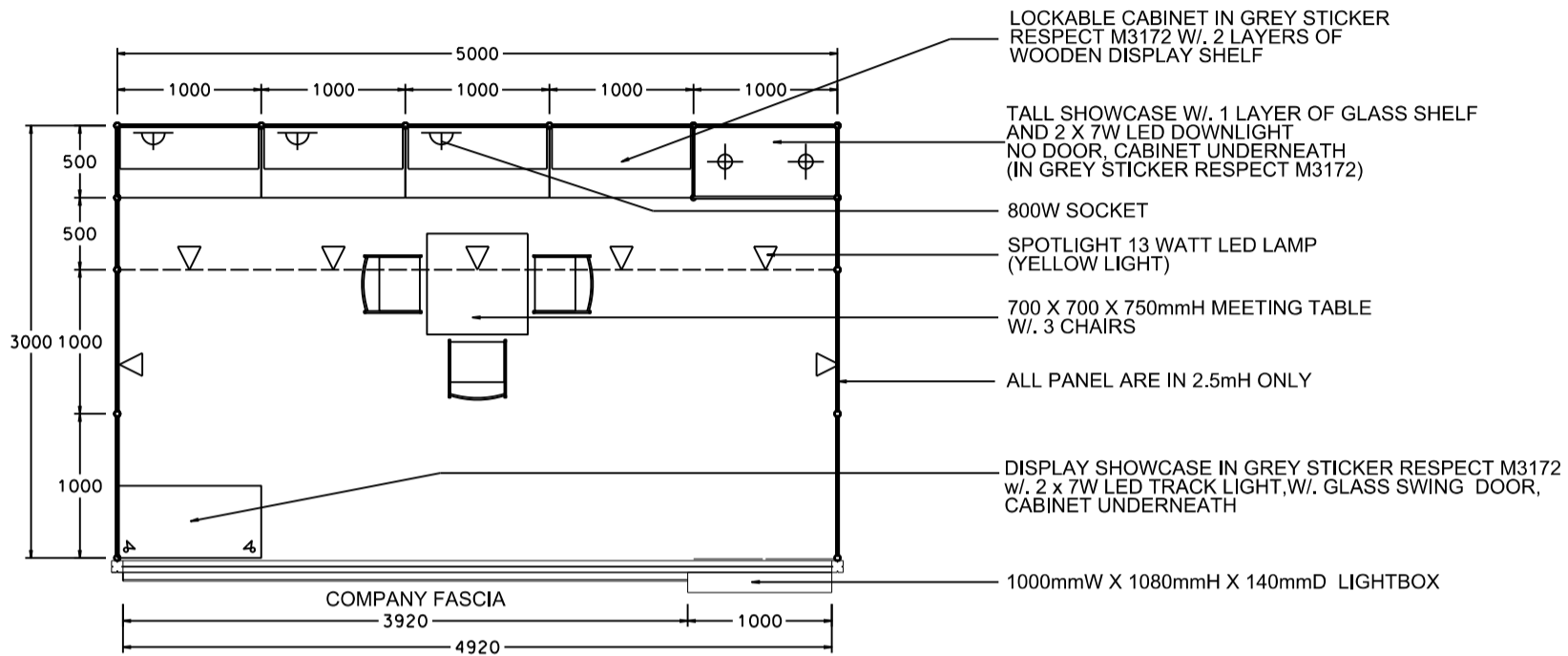


BOOTH SPECIFICATIONS		QTY.
	LOCKABLE CABINET 1000W x 500D x 750H mm	4
	WOODEN DISPLAY SHELF FLAT (3000W X 300D mm)	2
	WOODEN DISPLAY SHELF FLAT (1000W X 300D mm)	2
	TALL SHOWCASE W/ 1 LAYER OF GLASS SHELF AND 2 X 7W LED DOWNLIGHT (NO GLASS DOOR), CABINET UNDERNEATH	1
	800W SOCKET	3
	SPOTLIGHT 13 WATT LED LAMP (YELLOW LIGHT)	7
	700W x 700D x 750H mm MEETING TABLE	1
	BLACK LEATHER CHAIR	3
	CEILING BEAM	5M
	RUBBISH BIN & CARPET (15sqm.)	

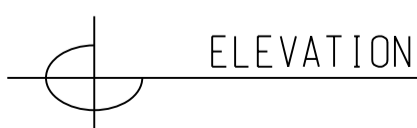
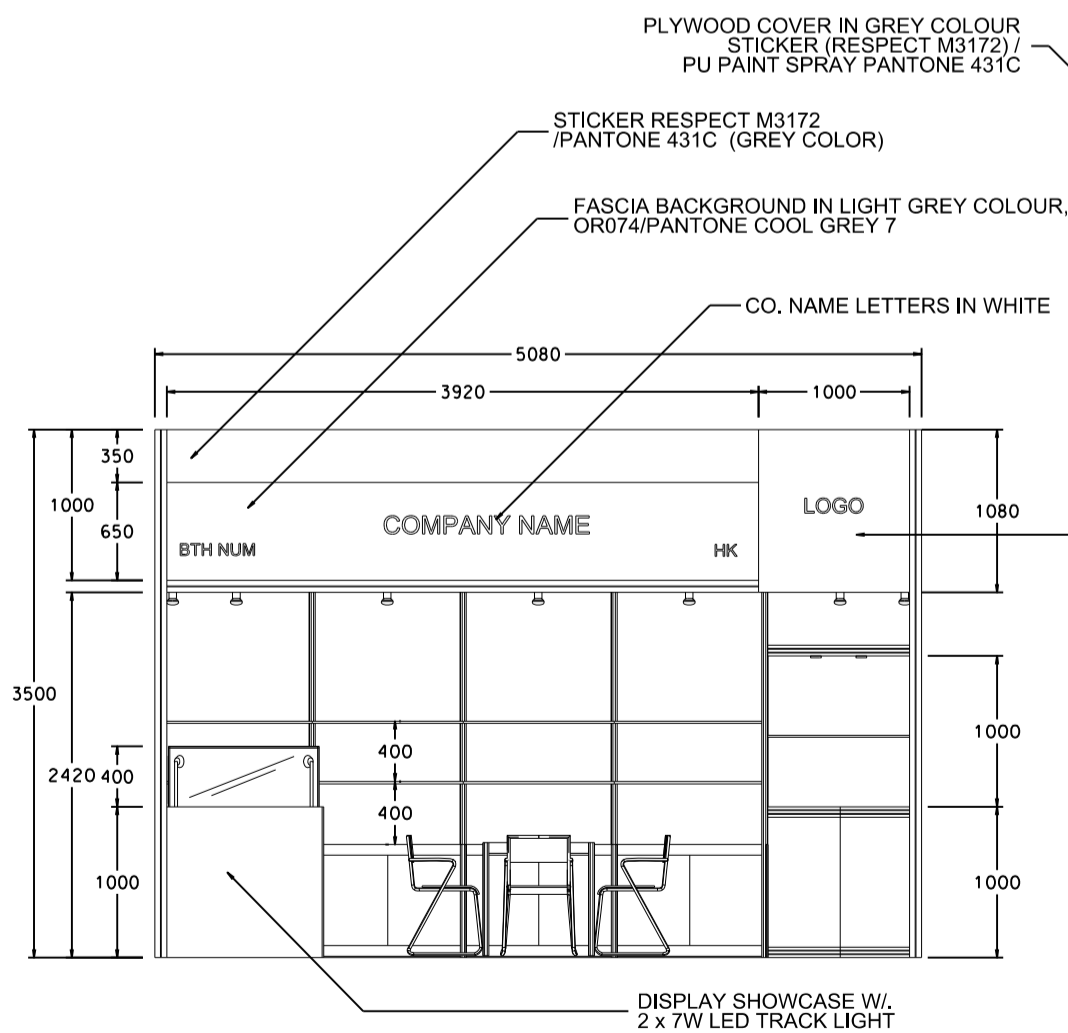
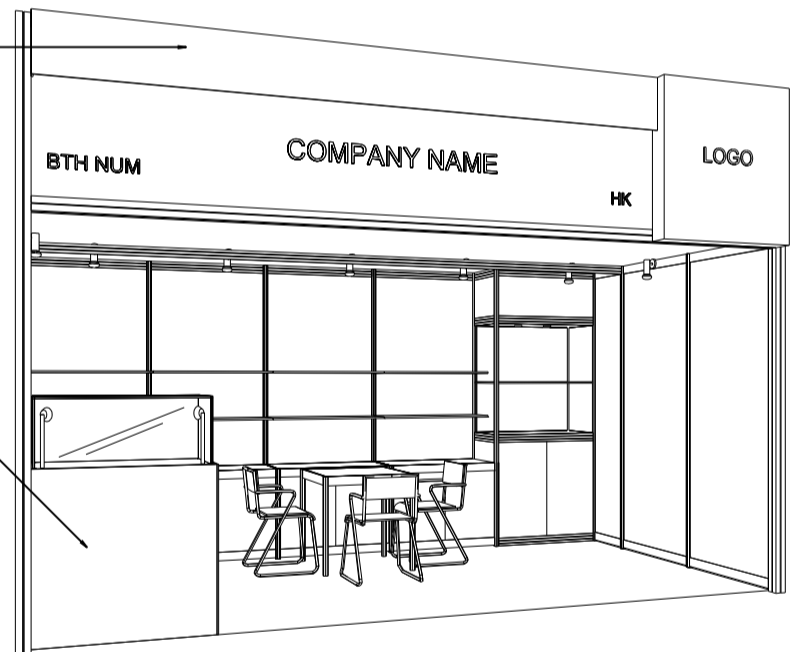
### OPTION E (LOW SHOWCASE - GREY)

### 5M x 3M Hall of Fame Booth

五米乘三米品牌薈萃廊特級攤位



CONCEALED LIGHT TROUGH TO HIGHLIGHT COMPANY FASCIA (IN GREY COLOUR, RESPECT M3172 / PANTONE 431c)



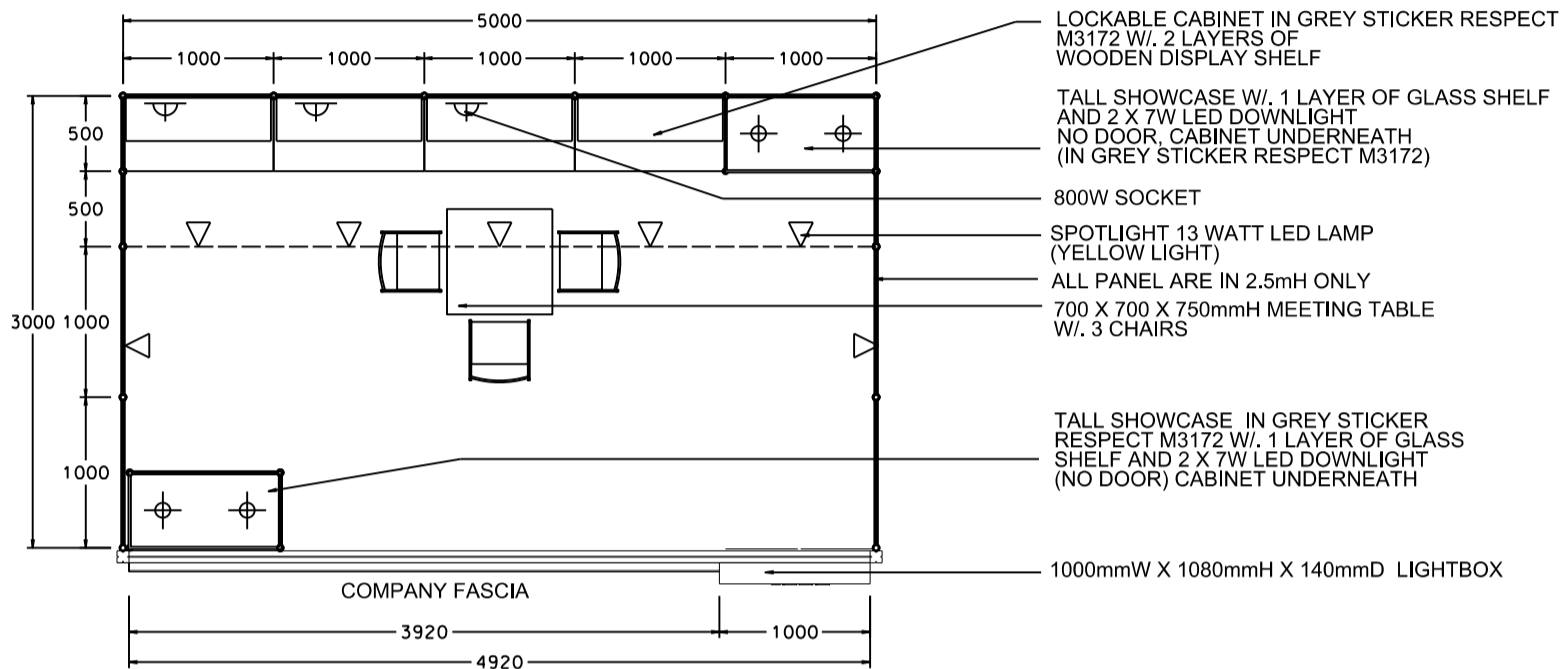
BOOTH SPECIFICATIONS		QTY.
	LOCKABLE CABINET 1000W x 500D x 750H mm	4
	WOODEN DISPLAY SHELF FLAT (3000W X 300D mm)	2
	WOODEN DISPLAY SHELF FLAT (1000W X 300D mm)	2
	DISPLAY SHOWCASE W/. 2 X 7W LED TRACK LIGHT W/. GLASS SWING DOOR, CABINET UNDERNEATH	1
	TALL SHOWCASE W/. 1 LAYER OF GLASS SHELF AND 2 X 7W LED DOWNLIGHT (NO GLASS DOOR), CABINET UNDERNEATH	1
	800W SOCKET	3
	SPOTLIGHT 13 WATT LED LAMP (YELLOW LIGHT)	7
	700W x 700D x 750H mm MEETING TABLE	1
	BLACK LEATHER CHAIR	3
	CEILING BEAM	5M
	RUBBISH BIN & CARPET (15sqm.)	

\*The Hong Kong Trade Development Council reserves the right to change the configuration if necessary.  
\*如有需要，香港貿易發展局有權更改攤位結構。

### OPTION F (TALL SHOWCASE - GREY)

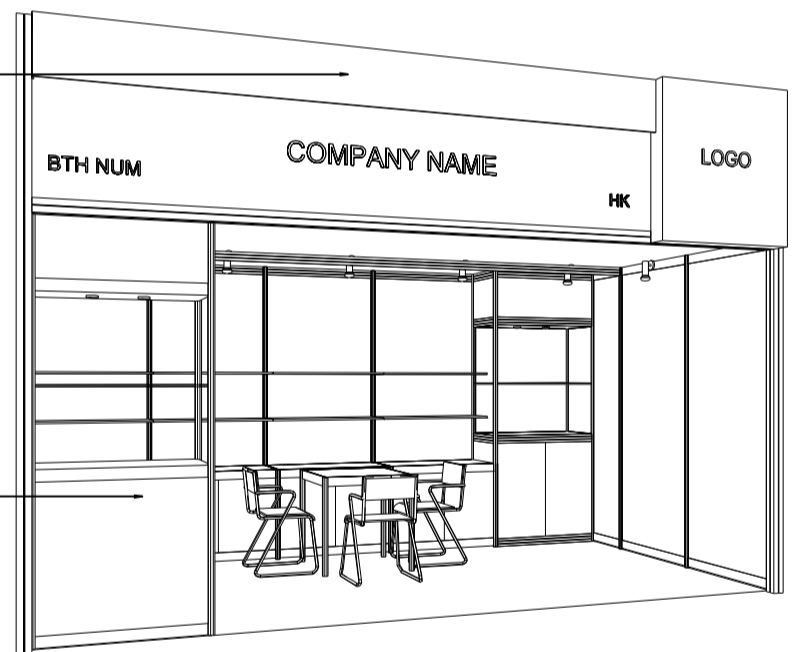
### 5M x 3M Hall of Fame Booth

五米乘三米品牌薈萃廊特級攤位

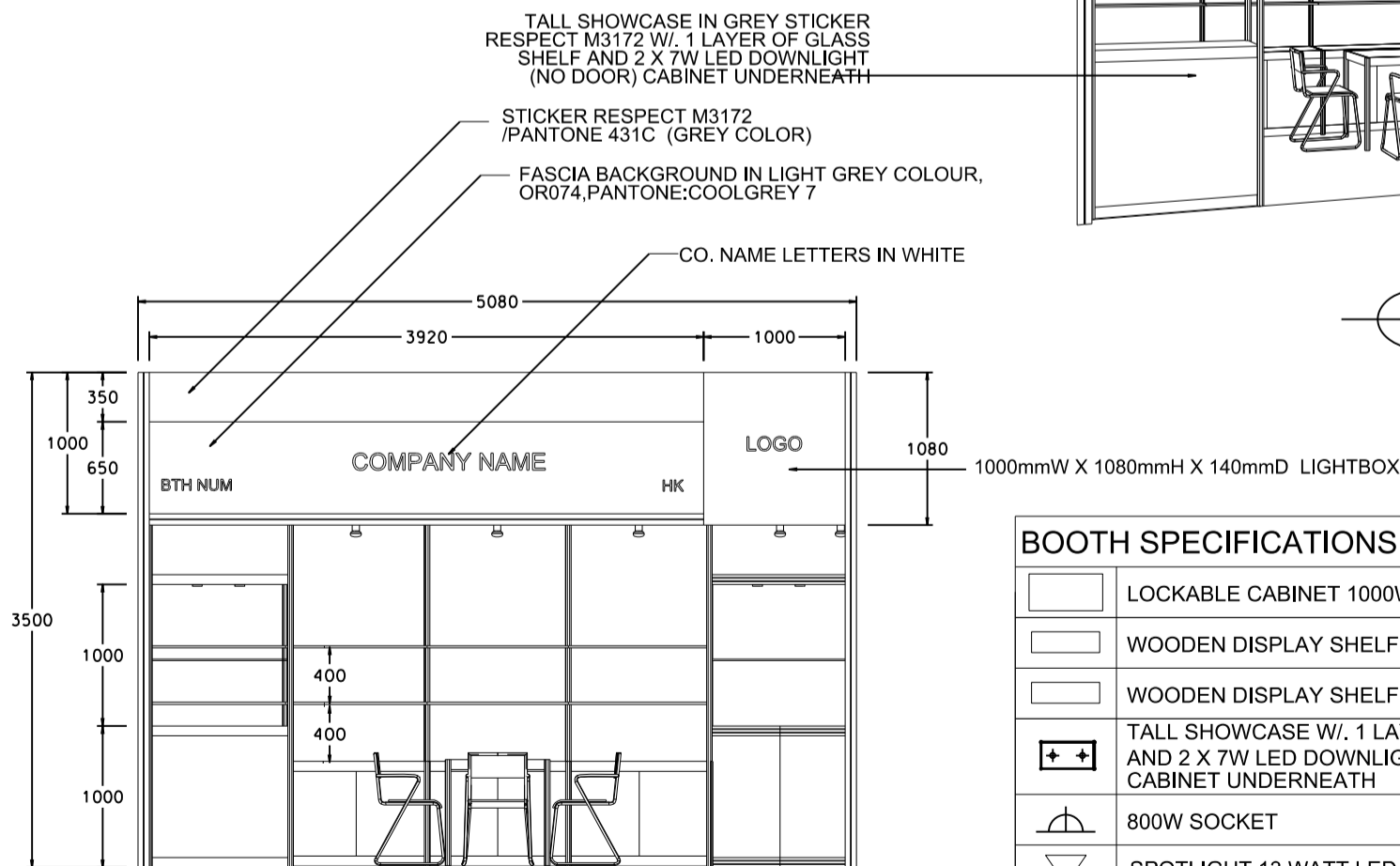


PLAN

CONCEALED LIGHT TROUGH TO HIGHLIGHT COMPANY FASCIA (IN GREY STICKER RESPECT M3172/PANTONE 431C)



PERSPECTIVE



ELEVATION

BOOTH SPECIFICATIONS		QTY.
	LOCKABLE CABINET 1000W x 500D x 750H mm	4
	WOODEN DISPLAY SHELF FLAT (3000W X 300D mm)	2
	WOODEN DISPLAY SHELF FLAT (1000W X 300D mm)	2
	TALL SHOWCASE W/ 1 LAYER OF GLASS SHELF AND 2 X 7W LED DOWNLIGHT (NO GLASS DOOR), CABINET UNDERNEATH	2
	800W SOCKET	3
	SPOTLIGHT 13 WATT LED LAMP (YELLOW LIGHT)	7
	700W x 700D x 750H mm MEETING TABLE	1
	BLACK LEATHER CHAIR	3
	CEILING BEAM	5M
	RUBBISH BIN & CARPET (15sqm.)	