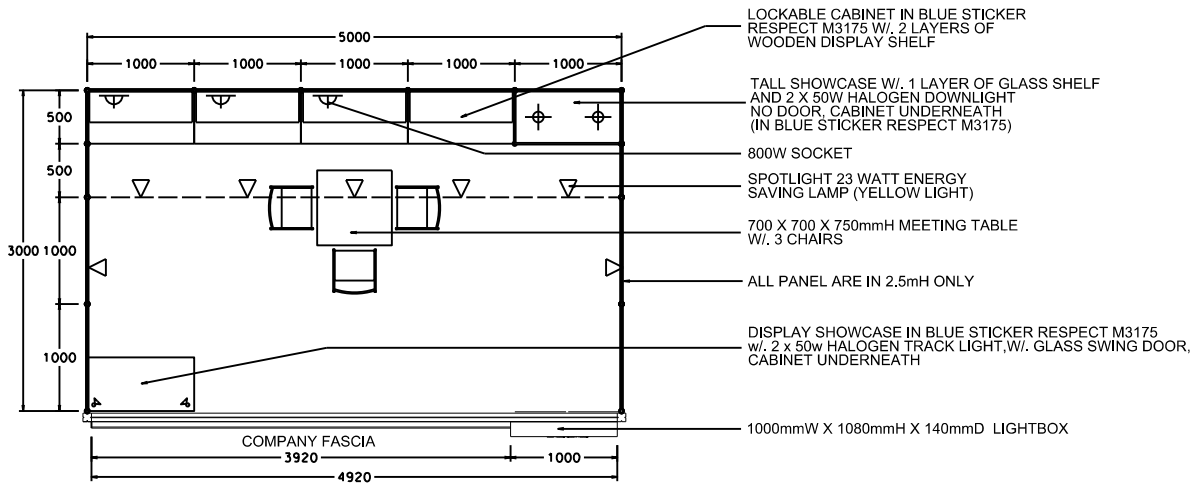


OPTION B (LOW SHOWCASE - BLUE)

5M x 3M Hall of Fame Booth

五米乘三米品牌薈萃廊特級攤位



PLAN

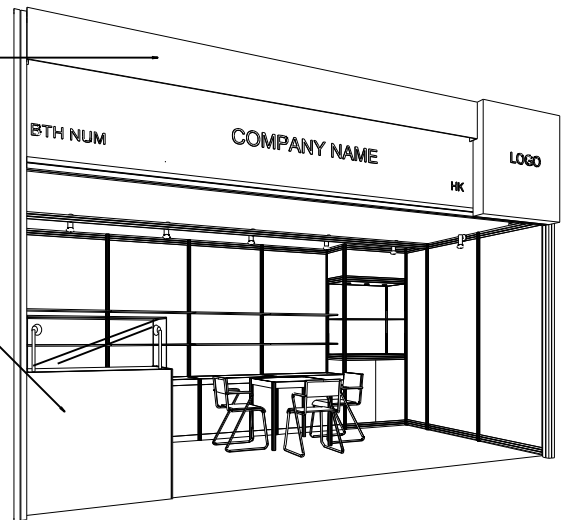
CONCEALED LIGHT TROUGH TO HIGHLIGHT COMPANY FASCIA (IN BLUE COLOUR, RESPECT M3175/PANTONE 633c)

PLYWOOD COVER IN BLUE COLOUR STICKER RESPECT M3175 PU PAINT SPRAY PANTONE 633C

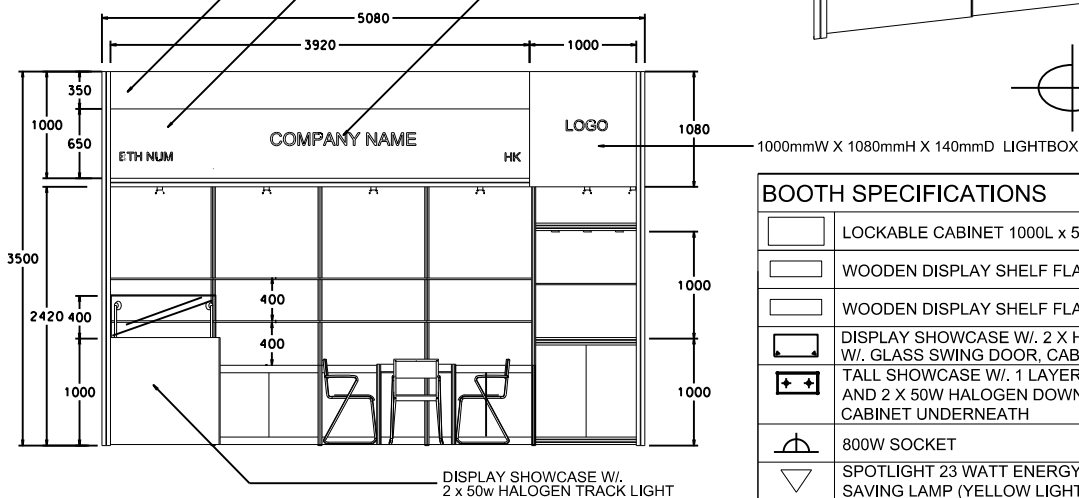
STICKER RESPECT M3175/PANTONE 633c (BLUE COLOR)

FASCIA BACKGROUND IN LIGHT BLUE COLOUR, OR056/PANTONE 298C

CO. NAME LETTERS IN WHITE



PERSPECTIVE

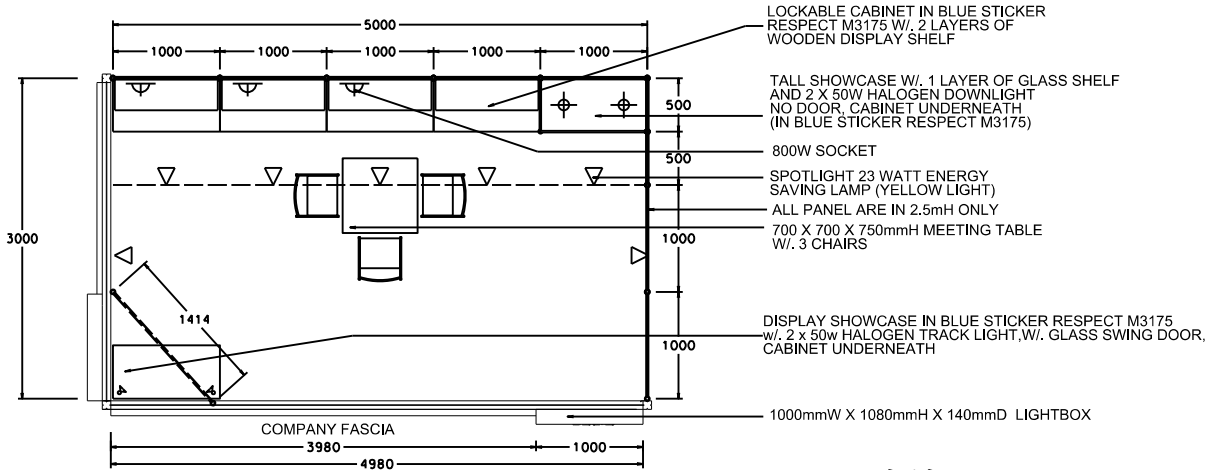


ELEVATION

BOOTH SPECIFICATIONS		QTY.
	LOCKABLE CABINET 1000L x 500W x 750H mm	4
	WOODEN DISPLAY SHELF FLAT (3000W X 300D mm)	2
	WOODEN DISPLAY SHELF FLAT (1000W X 300D mm)	2
	DISPLAY SHOWCASE W/ 2 X HALOGEN TRACK LIGHT W/ GLASS SWING DOOR, CABINET UNDERNEATH	1
	TALL SHOWCASE W/ 1 LAYER OF GLASS SHELF AND 2 X 50W HALOGEN DOWNLIGHT (NO GLASS DOOR) CABINET UNDERNEATH	1
	800W SOCKET	3
	SPOTLIGHT 23 WATT ENERGY SAVING LAMP (YELLOW LIGHT)	7
	700W x 700D x 750H mm MEETING TABLE	1
	BLACK LEATHER CHAIR	3
	CEILING BEAM	5M
	RUBBISH BIN & CARPET (15sqm.)	

5M x 3M Hall of Fame Booth (Left Corner)

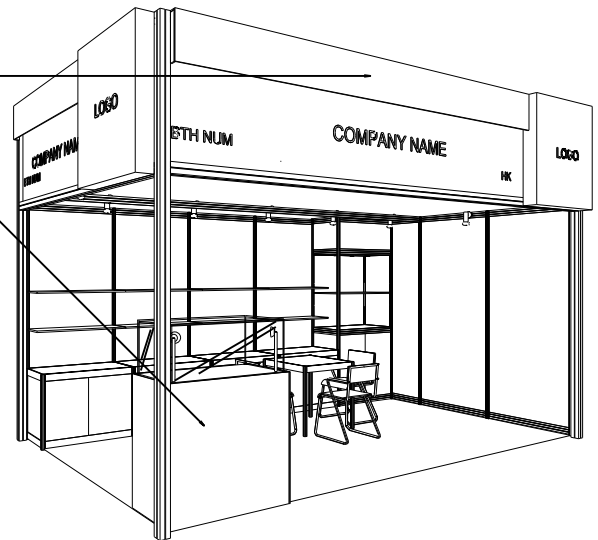
五米乘三米品牌薈萃廊特級攤位 (左邊角位)



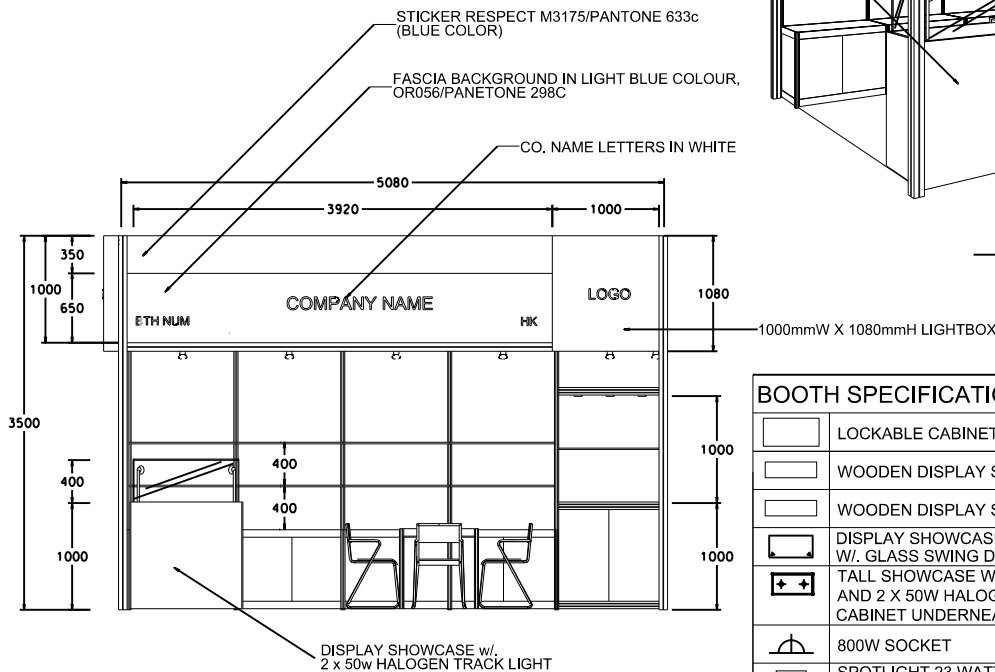
PLAN

CONCEALED LIGHT TROUGH TO HIGHLIGHT COMPANY FASCIA (IN BLUE COLOUR, RESPECT M3175/PANTONE 633c)

PLYWOOD COVER IN BLUE COLOUR STICKER RESPECT M3175 PU PAINT SPRAY PANTONE 633C



PERSPECTIVE



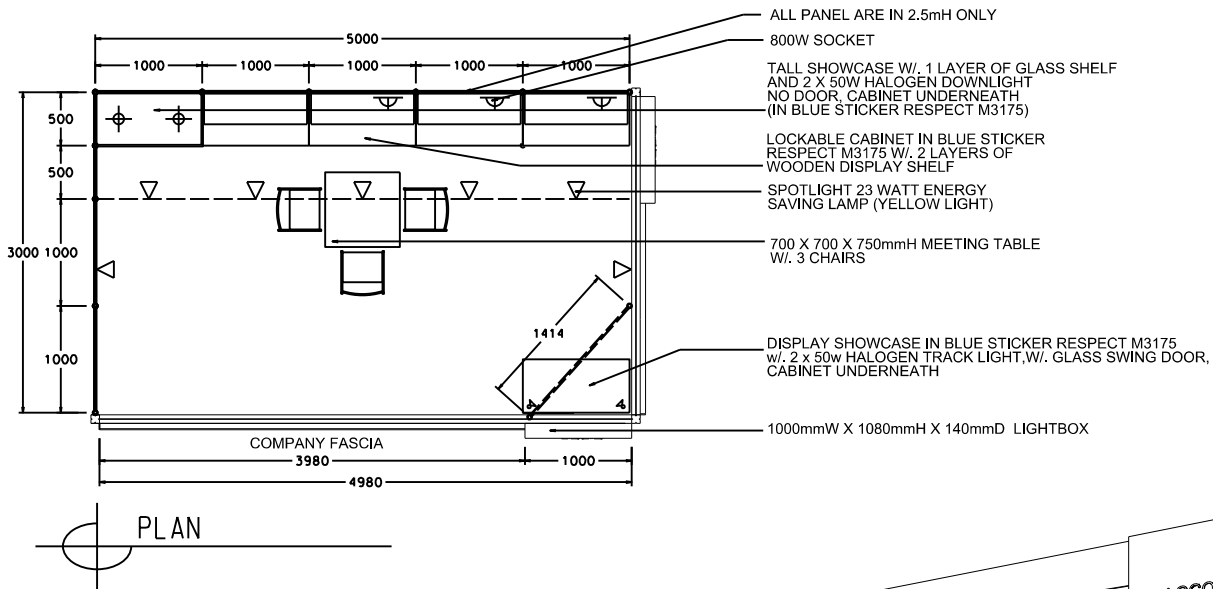
ELEVATION

BOOTH SPECIFICATIONS		QTY.
	LOCKABLE CABINET 1000L x 500W x 750H mm	4
	WOODEN DISPLAY SHELF FLAT (3000W X 300D mm)	2
	WOODEN DISPLAY SHELF FLAT (1000W X 300D mm)	2
	DISPLAY SHOWCASE W/ 2 X HALOGEN TRACK LIGHT W/ GLASS SWING DOOR, CABINET UNDERNEATH	1
	TALL SHOWCASE W/ 1 LAYER OF GLASS SHELF AND 2 X 50W HALOGEN DOWNLIGHT (NO GLASS DOOR) CABINET UNDERNEATH	1
	800W SOCKET	3
	SPOTLIGHT 23 WATT ENERGY SAVING LAMP (YELLOW LIGHT)	7
	700W x 700D x 750H mm MEETING TABLE	1
	BLACK LEATHER CHAIR	3
	CEILING BEAM	5M
	RUBBISH BIN & CARPET (15sqm.)	

OPTION B (LOW SHOWCASE - BLUE)

5M x 3M Hall of Fame Booth (Right Corner)

五米乘三米品牌薈萃廊特級攤位 (右邊角位)



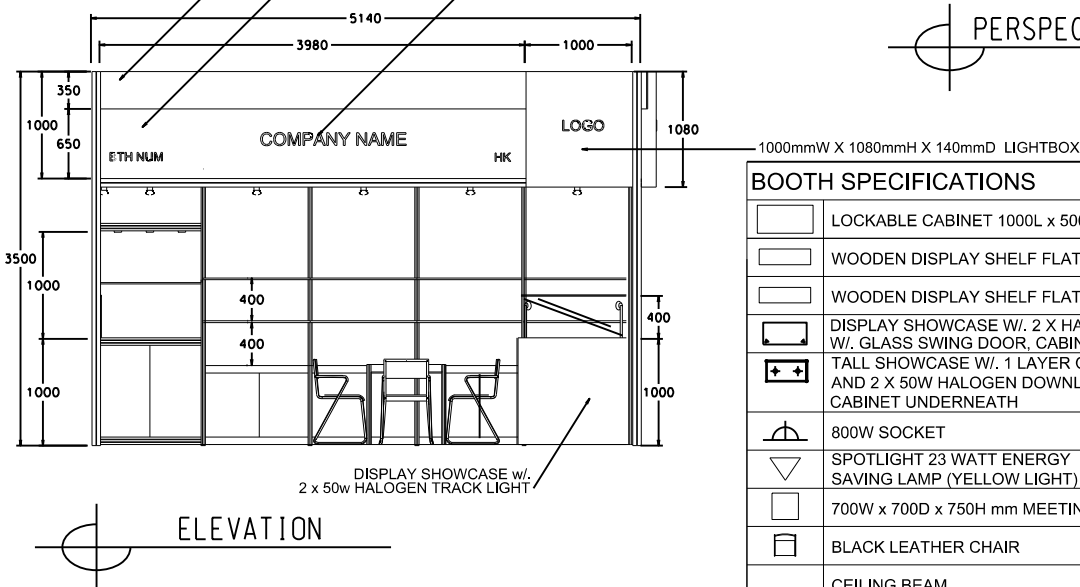
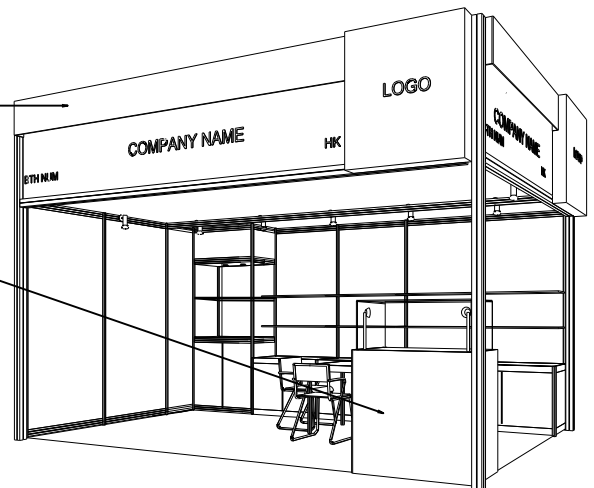
CONCEALED LIGHT TROUGH TO HIGHLIGHT COMPANY FASCIA (IN BLUE COLOUR, RESPECT M3175/PANTONE 633c)

PLYWOOD COVER IN BLUE COLOUR STICKER RESPECT M3175 PU PAINT SPRAY PANTONE 633C

STICKER RESPECT M3175/PANTONE 633c (BLUE COLOR)

FASCIA BACKGROUND IN LIGHT BLUE COLOUR, OR056/PANTONE 298C

CO. NAME LETTERS IN WHITE



BOOTH SPECIFICATIONS		QTY.
	LOCKABLE CABINET 1000L x 500W x 750H mm	4
	WOODEN DISPLAY SHELF FLAT (3000W X 300D mm)	2
	WOODEN DISPLAY SHELF FLAT (1000W X 300D mm)	2
	DISPLAY SHOWCASE W/ 2 X HALOGEN TRACK LIGHT W/ GLASS SWING DOOR, CABINET UNDERNEATH	1
	TALL SHOWCASE W/ 1 LAYER OF GLASS SHELF AND 2 X 50W HALOGEN DOWNLIGHT (NO GLASS DOOR) CABINET UNDERNEATH	1
	800W SOCKET	3
	SPOTLIGHT 23 WATT ENERGY SAVING LAMP (YELLOW LIGHT)	7
	700W x 700D x 750H mm MEETING TABLE	1
	BLACK LEATHER CHAIR	3
	CEILING BEAM	5M
	RUBBISH BIN & CARPET (15sqm.)	